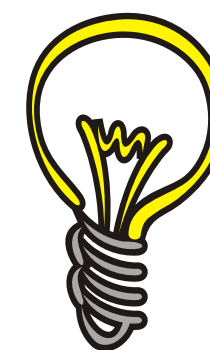


RUFFneon
signs and lighting maintenance, inc.
440 350 6267 24 HR
EMERGENCY
SERVICE

9287 Mercantile Dr. Mentor, OH. 44060
email: ruffneonsigns@aol.com fax: 440 350 6277



RUFFneon
signs and lighting maintenance, inc.

440 350 6267 24 HR
EMERGENCY
SERVICE

We are a full service
sign and lighting
maintenance company
with competitive pricing.
Specializing in custom
in-house fabrication.



Our Trucks
Range From
30' - 160'

- Crane Rental
- Directional Boring



Visit us on the web @ ruffneonsigns.com

Ruff Neon Signs and Lighting Maintenance, Inc. can provide a comprehensive consultation, design, fabrication, installation and lighting maintenance service for all your internal & external signage needs.

Prototype Design and Signage Development

We will sit down with you and listen to your ideas to create designs tailored to your ideas to your individual requirements. We will incorporate those ideas to help your business project a fully professional image.

Survey & Sign Permits

A field survey of your business will be conducted by one of our qualified sign technicians. We will contact your local municipality to establish the zoning requirements. This will ensure proper design creation with the regulations in mind to ensure a speedy permit approval process.

Manufacture

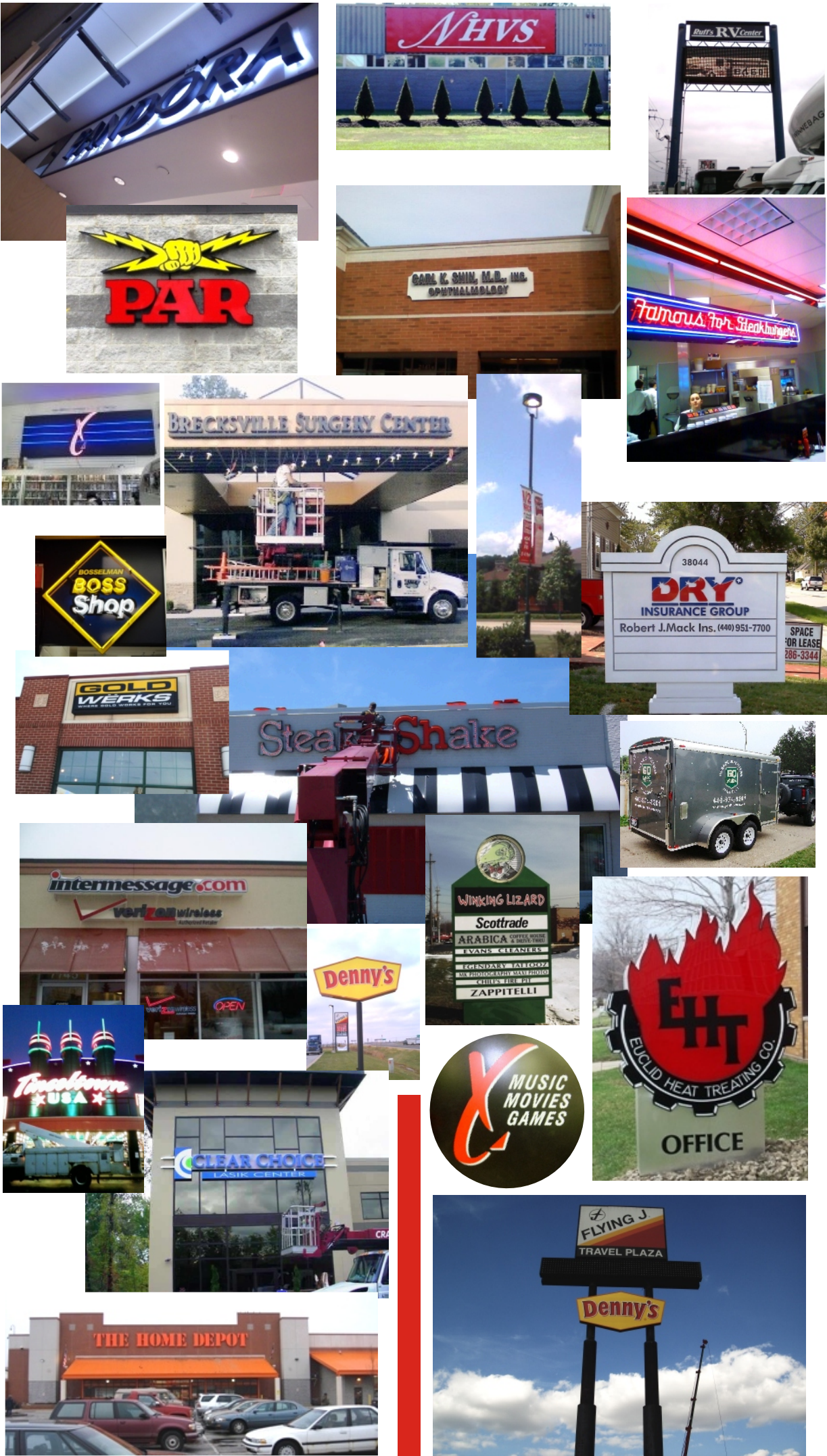
When the design of your sign has been finalized we will give you the expected turn around time and arrange an installation date if required. Our experienced sign technicians will provide you with the most innovative and cost effective solutions to manufacturing your signage.

Installation

Our team of experienced installers will deliver your signage and insure the installation is carried out safely and to required specifications at your convenience.

Maintenance

Ruff Neon Signs and Lighting Maintenance Inc. will remain dedicated to keeping your signage and lighting looking brand new with our 24 hour emergency service. Including inspection and replacement of components when required.



Our Signage Solutions

- Neon
- LED
- Illuminated Channel Letters
- Monument Signs
- Pole Signs
- Pylon Signs
- Directionals
- Wall Signs
- Architectural Signage
- ADA Way Finding Signage
- Retail Fascia & Branding
- Corporate Identity Solutions
- Unique Custom Signage
- Banners / Temporary Signage
- Yard Signage
- Vehicle Graphics
- Boat Graphics
- Light Boxes
- Flex Faces
- Formed Plastic Letters
- Flat Cut Letters
- Replacement Faces
- Vinyl Window Graphics
- Window Neon
- Neon Repair & Servicing
- Vehicle Magnetics
- LED Message Centers
- Gas Station Pricers
- Changeable Copy Boards
- Bank Traffic Controllers
- Bank Atm Refurbishing
- New Light Pole & Old Refurbishing
- Parking Lot Lighting
- Exterior Building Lighting
- Interior Lighting & Maintenance
- Awnings
- Repelling
- Metal Plaques
- Sidewalk Signage
- Surveys
- Permitting

Other Specialties

- Tree Service
- Snow Plowing



RUFFneon
Signs and lighting maintenance, Inc.
440 350 6267 24HR
EMERGENCY SERVICE
9287 Mercantile Dr. Mentor, OH. 44060
email: ruffneonsigns@aol.com fax: 440 350 6277
Visit us on the web @ ruffneonsigns.com